



PRICE GUIDE: \$465,000.00

Area: 628 m2

LARGE FAMILY HOME ON A 628m2 BLOCK

This wonderful family home has 3 very large bedrooms, an extra large kitchen, 2 large living areas and a larger than normal block. Even the laundry and main bathroom are bigger than normal. So if you have not already guessed, the rooms in this home are larger than most.

A spacious, light, bright and airy home with the main living areas and meal / dining all being North facing - with sliding door access out to the beautiful landscaped yard. There is opportunity to create extra out door living spaces and make this stunning home come to life.

Features

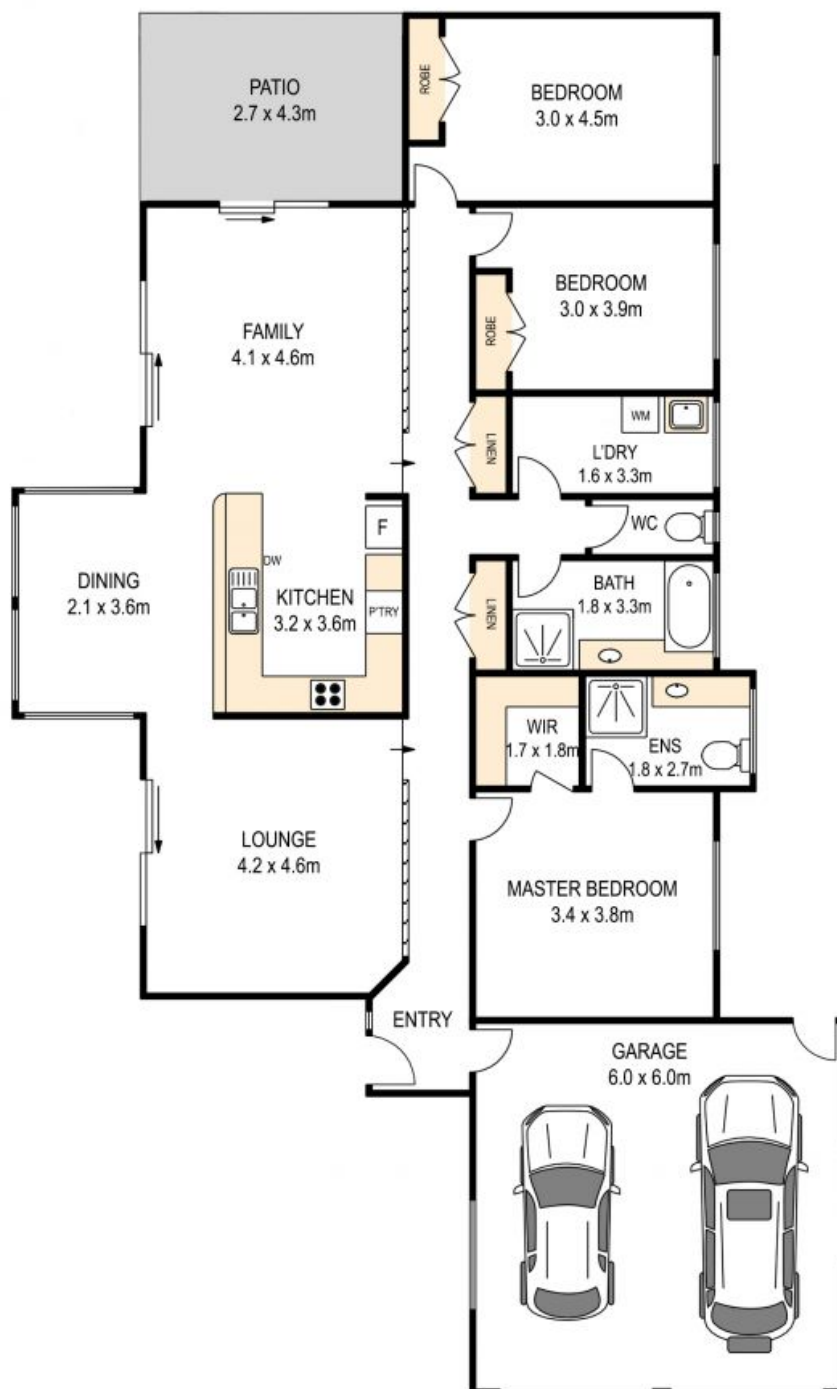
- * 3 very large bedrooms
- * 2 bathroom
- * 2 car garage
- * 4.3 x 2.7 covered outdoor area
- * 2 living areas



John Ward
0427 090 968

ONE AGENCY
WARD REAL ESTATE

OFFICE



7 Gray Road, Bray Park

Whilst every attempt has been made to ensure accuracy, floor plans are representative and should be used as a guide only