



PRICE GUIDE: Offers Over \$420,000

Area: 602 m2

4 BEDROOMS PLUS ROOM FOR A SHED

SNAPSHOT

- * 4 Bedrooms
- * 3 Bathrooms
- * Side access
- * 1 Car lockup garage
- * 602 m2 block

This neat and tidy 4-bedroom home with an internal stair case is different from a lot of the homes in the area. The kitchen is downstairs, and it has 4 bedrooms upstairs plus 3 bathrooms, 2 up and one down.

If you are considering setting your own stamp on a house and making it your home ? then this is a must see!

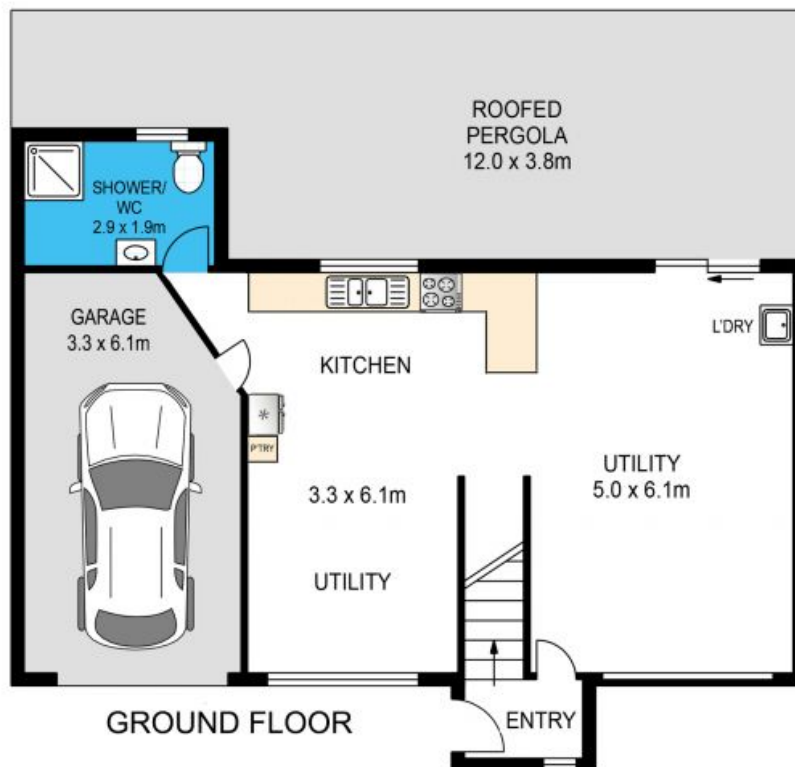
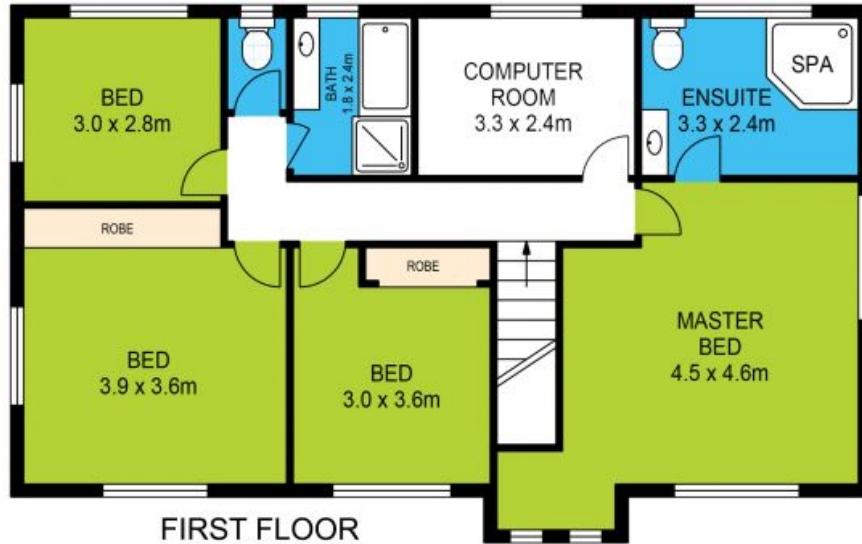
Features:



John Ward
0427 090 968



OFFICE



23 Avalon Court, Strathpine

Whilst every attempt has been made to ensure accuracy, floor plans are representative and should be used as a guide only